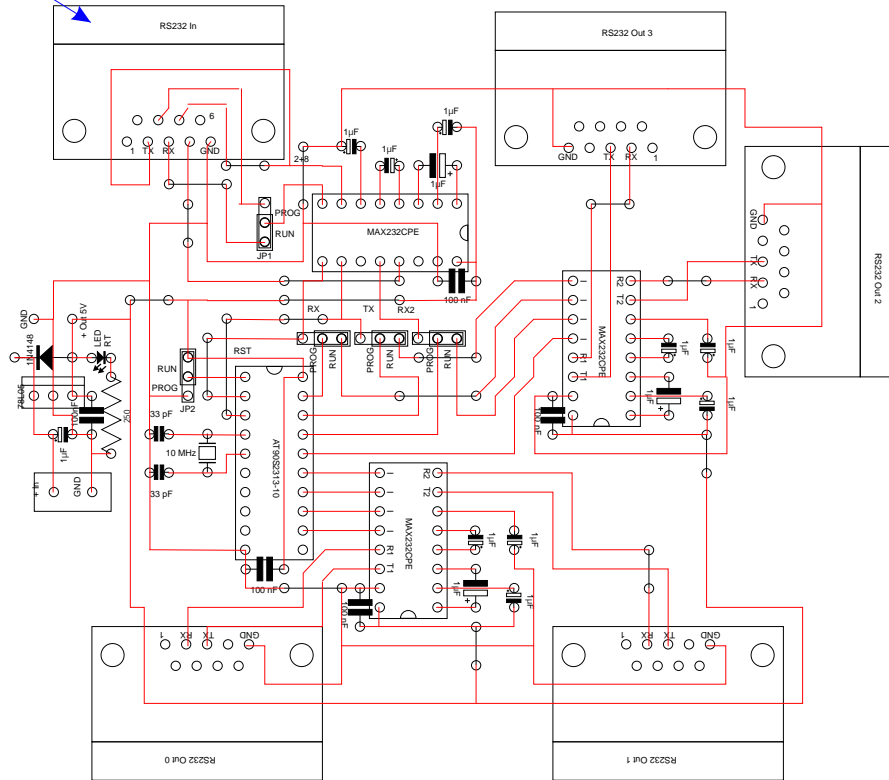
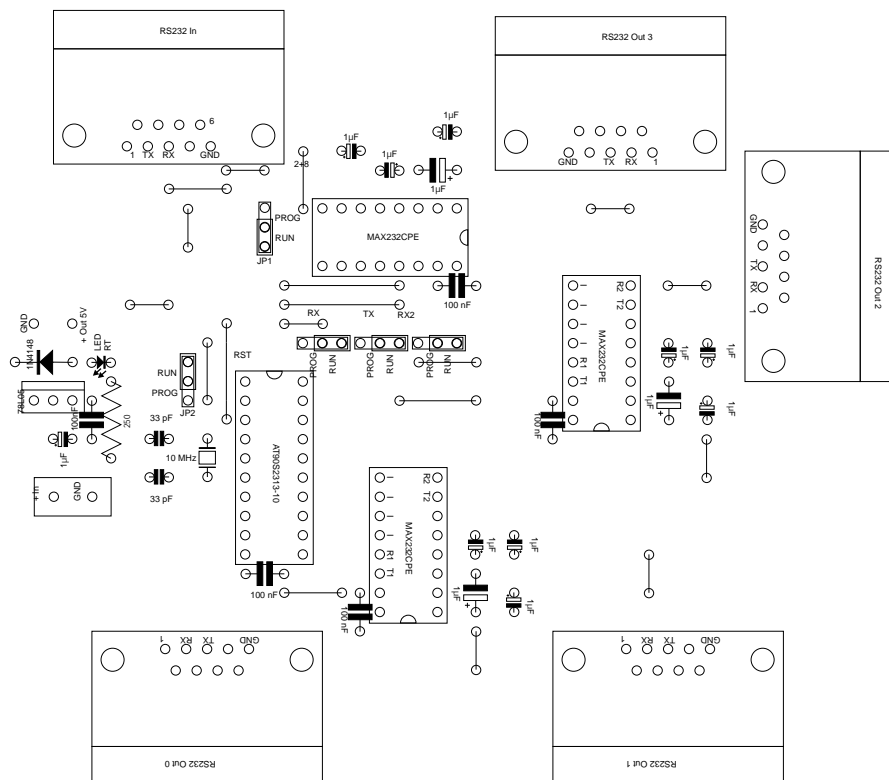


## Top view, devices with circuit paths

Master port



## Top view, devices only



For programming the controller, you need Vimms for Linux (vfl), the Vimms AVR programmer, and the microcontroller program (version A or version S) in Intel Hex format. All can be downloaded at <http://www.vimms.org>.

Good Luck!

Frank Hitzel



Etch layout

